

THEME: TURBO

FOREIGN OBJECT DAMAGE

BACKGROUND

The turbocharger is a highly sophisticated and fragile component. It is a turbine-driven device that forces extra air into the engine's combustion chamber, thus increasing engine efficiency and power output.

The turbocharger operates in extremely demanding and tough conditions: up to 250,000 RPM and 1,100 °C of hot exhaust. At these high performance levels, improper working conditions as well as dirt and foreign objects inside the system can very easily damage the turbo.

PROBLEM

The presence of any foreign objects inside the internal operation of the turbocharger can cause immediate and total failure of the turbo. Commonly, foreign object damage is caused by foreign materials entering the turbine, compressor or bearing housing, thus impacting the rotating wheels and shaft. Damages lead to a loss of efficiency and extra noise from the turbo. In worst case scenario: a totally destroyed turbo.

In severe cases of foreign object damage, it is common for the resulting fragmentation of internal components at very high speed to cause instantaneous and irreversible damage to the engine, exhaust system or intercooler. This can cause total engine failure and render a vehicle unfeasible for repair.

RECOMMENDED SOLUTION

Always ensure that the entire air system is totally clean and free from any objects, which may cause the damage to the turbo. Any splits or gaps in pipe work can pull in unfiltered objects all the way from the air filter box to the turbo including EGR, manifold and engine breather system. Make sure also to check that air hoses and connectors are intact and in good working condition.

Using new gaskets helps to prevent the risk of gasket break up and to ensure a perfect seal.

Additionally, the engine oil along with the oil supply and return pipes with fittings should be flushed, changed and thoroughly inspected for evidence of foreign objects.

Be sure always to adopt a methodical approach to removing and cleaning every component after a turbo failure caused by foreign object damage or total breakdown. If any doubt, check the system again.

FREQUENT SOURCES OF FOREIGN OBJECTS



FOREIGN OBJECTS ENTER THE TURBOCHARGER EITHER THROUGH THE COMPRESSOR, TURBINE OR OIL INLET!

COMPRESSOR WHEEL

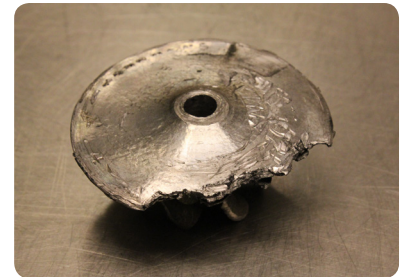
- Poor, worn or badly maintained air intake filters allowing particles through
- Damaged piping and connecting, allowing particles to enter the intake
- Gasket fragments entering the intake
- Parts from a previous turbocharger failure not fully removed from the system
- Foreign objects such as screws, nuts and bolts entering the new compressor as a result of negligence
- Turbo overspeeding, causing the compressor wheel to break down

TURBINE WHEEL

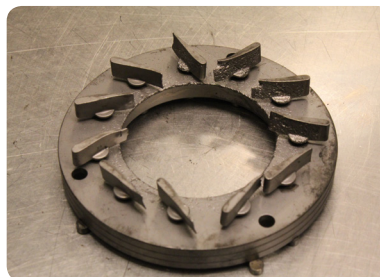
- Debris from exhaust manifold, turbine housing or engine parts such as engine valves pistons impacting the turbine wheel and the variable mechanism
- Exhaust contamination by hardened, burned fuel and oil particles, oil sludge, burned additives particles and other coked debris coming from the combustion



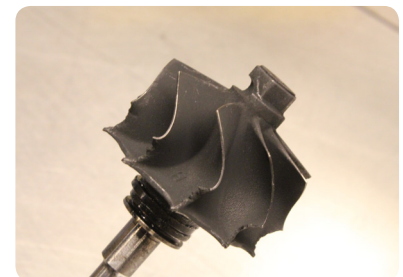
Compressor wheel damage caused by foreign objects. The blades have been hit repeatedly, and the compressor housing inducer will also bear signs of hits by the foreign objects.



Compressor wheel with a missing blade or parts of it due to overspeeding. The overspeeding failure generates objects – the broken parts of the wheel – that will continuously destroy the turbo.



Foreign object damages visible on the variable geometry mechanism. Hardened particles inside the exhaust system has continuously hit the guiding vanes, causing grooves.



The turbine blades are hit by foreign objects and eventually combined with too high exhaust temperature.

SIGNS OF FOREIGN OBJECT DAMAGE

Look for the following signs when suspecting foreign object damage:

- Noise from the turbo during operation
- Loss of performance
- Chipping of compressor or turbine blades
- Pitting around the compressor inlet
- Pitting on the compressor blades

©Nissens Automotive A/S, Ormhøjgårdvej 9, 8700 Horsens, Denmark.
For further technical and contact information, visit our website: www.nissens.com.

The material and its contents are provided without warranty of any kind, and by publishing of it, we disclaim any liability. Always follow the given vehicle manufacturer's instructions to ensure the right service and maintenance procedures. Nissens Automotive shall not be responsible for any property damage or personal injury, direct or indirect damage from failure or down time in vehicle operation caused by incorrect application, installation, misuse and/or abuse of our products.